



## **JetStreamVS**

Quick Start Guide  
Avatar Installation

# Contents

Client Installed Avatar .....	<b>3 - 7</b>
What You Will Need .....	<b>3</b>
Installing an Avatar .....	<b>3 - 6</b>
Adding an Avatar to Devices .....	<b>7</b>

# Client Installed Avatar

## What you will need

- USB Flash Drive (2Gb Minimum)
- Link to a disk image with ISO (for example, FTP)
- A program for creating a bootable USB flash drive (for example, Rufus)
- A client program for connecting to SSH (for example, PuTTY)
- Monitor, Keyboard, Internet connection for Avatar Device



## Installing an Avatar

### 1. ISO Download

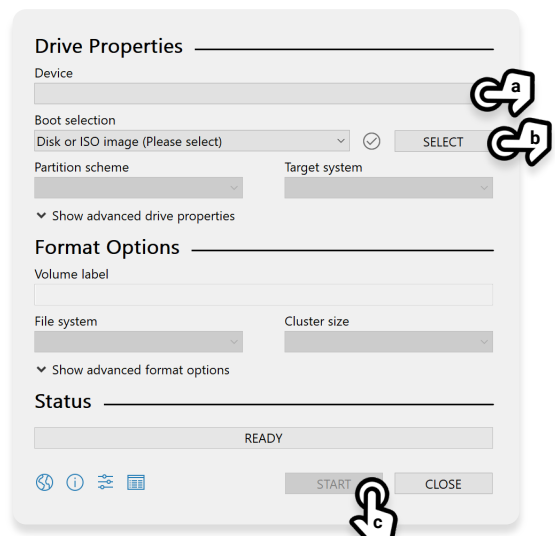
Download the latest 3.10 codebase ISO disk image from the link (CentOS7 + Avatar):

<https://ftp.videonext.net/private/AVATAR-RELEASES/isos/>

### 2. Create Bootable Flash Drive

Using the program "Rufus" - create a bootable USB flash drive with the downloaded ISO

- a. Select USB Device
- b. Select ISO file from file explorer
- c. Once READY, press START to begin transfer to USB Flash Drive



# Client Installed Avatar

## 3. Booting the ISO onto the Avatar

### a. Getting the device ready

Make sure the device is powered off before starting. While still powered off insert the flash drive with this ISO file. Power on the device and immediately enter the device's BIOS.

**Note:** Different devices have varying ways of getting into the BIOS. Consult manufacture instructions

### a. Configure device BIOS

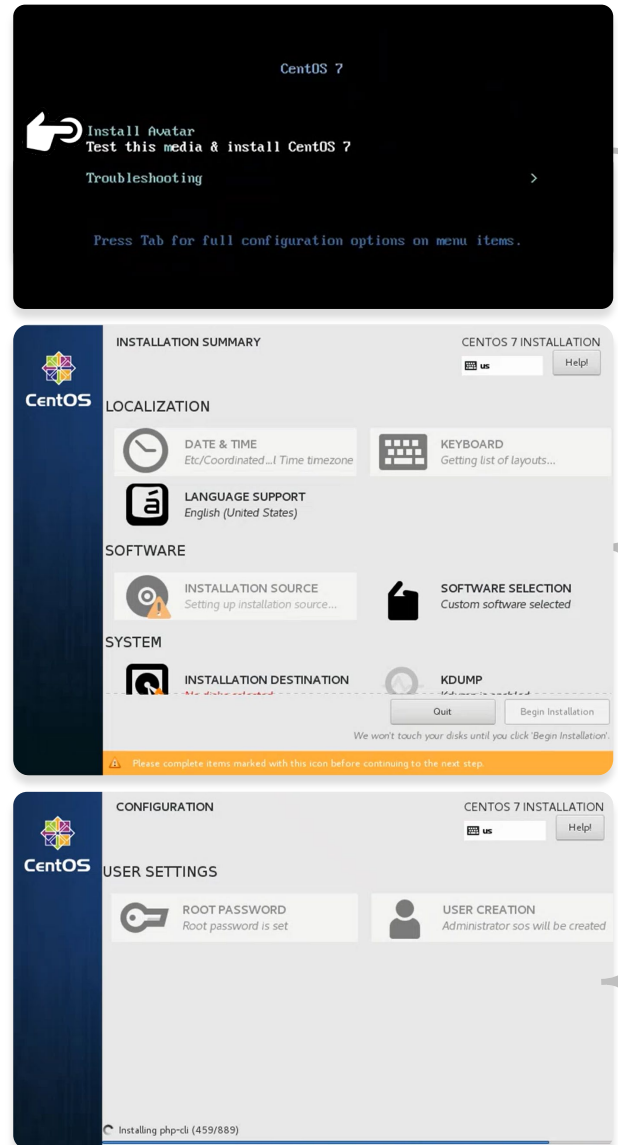
Once in the BIOS, set it so that the device can boot from a USB flash drive

### c. Booting the ISO

Once booted the screen will display a CentOS 7 prompt. Using the arrows on the keyboard select **Install Avatar** and press ENTER to execute. The software will take a moment to install

When the Installation Summary screen appears, go through the steps marked with an alert icon ⚠ and press Begin Installation. The software will take a few minutes to install

Figure C Example



# Client Installed Avatar

## 4. Configuring the Avatar

### a. Login

Login as user **sos**

Default password: **s.o.s.**

The 'sos' user will be prompted to change the password to a new one. Change the password for 'sos' to a new password

Once the new line starting with [sos@avatar ~] appears

### b. Escalate permissions to the user 'sos'

Enter the command: **sudo -i**

Re-enter the newly set sos password

### c. Changing root password

Change to user: **[root@avatar ~]#**

Enter the command **'passwd'** to change the password to a new one for the user 'root'

Enter new password and retype it. The system should update successfully

### d. Finding Avatar IP

Enter the command **'ifconfig'** to find the IP of the avatar

Scroll down to the **eth0** line and find the IP next to the **inet** line

**IMPORTANT:** Copy the IP address for reference

Figure A Example

```
Avatar login: sos
Password: PW WILL BE INVISIBLE
You are required to change your password
Changing password for sos.
(current) UNIX password: PW WILL BE INVISIBLE
New password: PW WILL BE INVISIBLE
[sos@avatar ~]$
```

Figure B Example

```
[sos@avatar ~]$ sudo -i
[sudo] password for sos: PW WILL BE INVISIBLE
[root@AV-000 ~]#
```

Figure C Example

```
[root@avatar ~]# passwd
Changing password for user root.
New password: PW WILL BE INVISIBLE
Retype new password: PW WILL BE INVISIBLE
passwd: all authentication tokens updated
successfully
[root@avatar ~]#
```

Figure D Example

```
[root@avatar ~]# ifconfig

eth0: flags=0000<UP,BROADCAST,RUNNING,MULTICAST>
      inet 000.000.00.00 netmask 000.000.000.0
      inet 6 0000::0000:0000:0000:0000 prefixlen
      ether 00:00:00:00:00:00 txqueuelen 0000..
```

# Client Installed Avatar

## 5. Activating the Avatar

Activate the avatar via the /etc/avatar-pre-conf file (Pre-configuration file for Avatar)

### a. Opening and Editing Pre-Conf File:

Enter '**cd /etc/**' into the console, this will define the ETC directory

Then enter '**vi avatar-pre-conf**' into the console, this will open the Pre-Configuration file

To edit the file, press the **INSERT** key

In the avatar-pre-conf file, enter the following:

- dst=<VaaS-Address>  
**Note:** Enter "#" before the realm address to disable the realm's access to the Avatar
- ntp=<NTP-Server-Address>
- hostname=<Avatar-Hostname>

Exit editing mode by pressing the **ESC** key  
Save and exit the file by entering the command '**:wq**'

Enter '**cd /root/**' to return to the root directory

### b. Activation

In the console activate the Avatar. It may take a moment to establish a connection between the Avatar and realm

Once the GUID code appears under the last line of the console the Avatar activation has been finished

**IMPORTANT:** Copy the GUID for reference

Figure A Example

```
[root@avatar ~]# cd /etc/
[root@avatar etc]# vi avatar-pre-conf
```

```
# Pre-configuration file for Avatar
# Bellow are listed parameters...

#dst=test1.video.net
dst=test2.video.net

ntp=0.pool.ntp.org

hostname=AV-000
~
~
~
```

```
~
~
:wq
```




```
[root@avatar etc]# cd /root/
[root@avatar ~]#
```

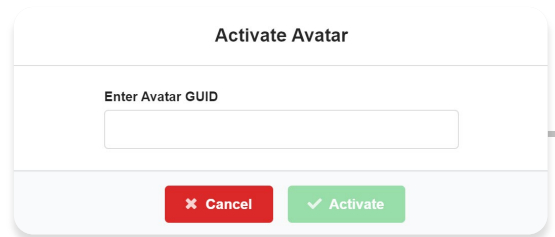
Figure B Example

```
[root@avatar ~]# activate
Using VSaaS: dst=test2.video.net
Generating SSH keys
Configuring logrotate
Set hostname=AV-000
Stop avatar engines if any running
Net.ipv4.ping_group_range = 0 0000000000
Our GUID: 00000000-0000-0000-0000-000000000000
```

# Client Installed Avatar

## Adding an Avatar to Devices

1. Go to the  Devices on the Navigation Panel
2. Click on  to register your Avatar within the system
3. Obtain your GUID that was generated previously in PuTTY  
(i.e. `cc0aaf19-9b3f-4976-8129-eb00820aba10` )
4. Enter GUID into the dialog box
5. Click  to activate your Avatar. The Avatar has been added to the system



Activate Avatar

Enter Avatar GUID

